

Checklist

Name: Md Rafi Islam		Vape Brand: GeekVape Aegis hero		Date: 04/25/2024	
Task no.	Steps			Status (Y/N?)	
1	Charge the vape.			Y	
2	Charge the FRIENDS device.			Y	
3	Mark RF sensor location on the FRIENDS enclosure				
4	Draw a 7mm grid on the vape			Y	
5	Wrap the vape's mouthpiece with putty.				
6	Attach the vape to the vacuum line.			Y	
7	Identifying the sensitive zones	7a	Based on the grids on vape, select a side (front, back, right, left, or bottom), place the FRIENDS on top left corner of that side.	Y	
		7b	Initiate puff with the vacuum and very slowly slide the FRIENDS from top to the bottom. Make sure the vape is puffing by observing the puff indicator light on the vape.	Y	
		7c	Observe the Green LED of the FRIENDS	For stable green, mark the location with "X" in the grid on the vape.	Y
				For no LED illumination, left the space blank in the grid.	Y
		7d	After marking the sensitive spot on the vape, start sliding the FRIENDS device again and complete the whole row.		Y
		7e	Then place the FRIENDS on the middle of the vape and repeat steps 7b to 7d.		Y
		7f	After finishing scanning this row with FRIENDS, go to the next row and so on.		Y
		7g	In this way, the front side of the vape will be scanned for sensitivity zones and the grid on the vape will be marked with the "X" symbol if the vape is sensitive to FRIENDS device.		Y
		7h	Then place the FRIENDS on another side (e.g. front, back, right, left, or bottom) of the vape and start scanning again. Repeat steps 7a to 7e and populate the documentation table.		Y
		7i	Finally, after completing scanning all the sides of the vape, take a picture of each side of the vape and insert the images in the checklist document table below.		Y
		7j	If there are multiple sensitive zones, select a possible FRIENDS mounting location based on signal strength and usability.		Y
7k	Take a picture and insert it at the end of the checklist documentation.		Y		

Sensitivity documentation table (Rectangular vape)

For a stable green LED, mark the location with the letter "X" in the grid



Front view



Back view



Left side view

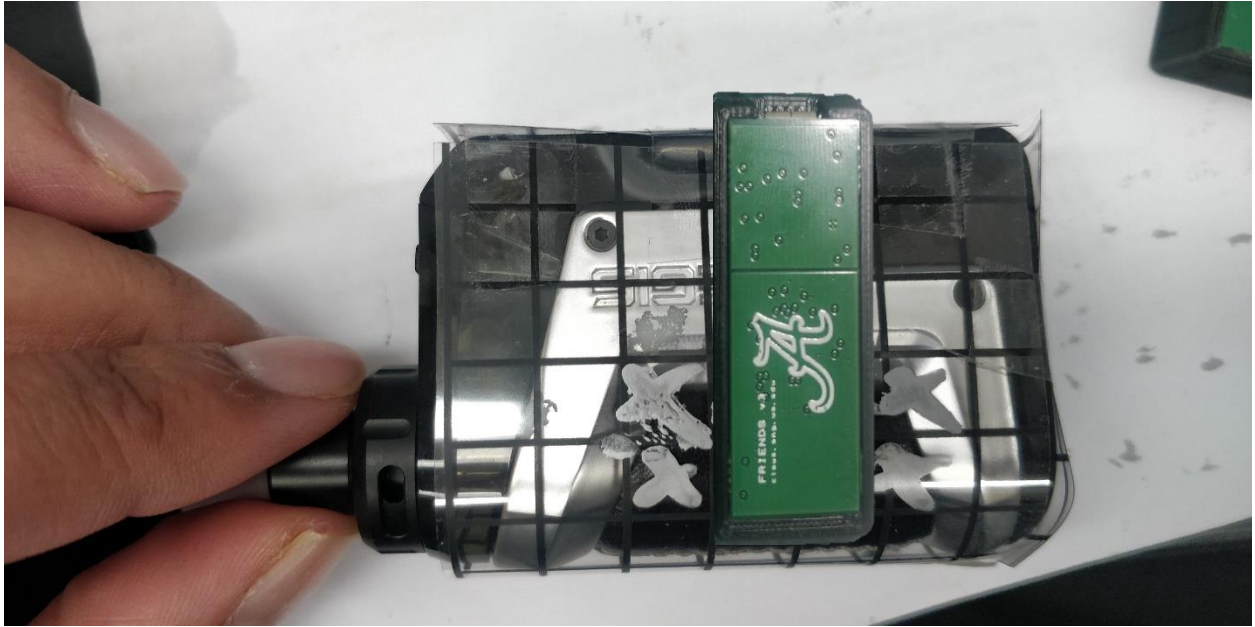


Right side view



Bottom view

Suggested Friends Device Placement:



RF sensor Location: Back middle